



HIGHLIGHTS FOR AUGUST

- First Arrival of Components to Geelong Port
- Back Filling of Foundations have begun
- Underground Cable Laying has begun
- On-Site Sub Station Earthworks

ONGOING CONSTRUCTION EVENTS

- Continued Excavations of Foundations
- Continued Steel Reinforcement of Foundations
- Continued Concrete Pours of Foundations
- Continued Back Filling of Foundations

COMMUNITY UPDATE

GPG has now received the draft from Enhar, for the 3D visualization tool in Google Earth and 3D fly-through video of the wind farm. Both of these tools will soon be accessible from Berrybank Wind Farm's new website, which is close to completion. GPG has been working hard over the past months on our Solar Power Program, along with input from Corangamite and Golden Plains Shire Councils.

GPG has sought offers from several local solar power providers and installers to implement the Program. Once GPG has reviewed these offers and established a working partnership with the successful candidates, we will begin to roll out the program to supply and install solar panels to shire council buildings; and via application to residential households, small businesses and local volunteer groups.

CONSTRUCTION UPDATE

The Principal Contractor, Vestas, have secured the services of Duggan Civil to complete the essential maintenance, repairs and upgrades to the intersection of Hamilton Hwy and Berrybank-Wallinduc Road. Vestas have advised that traffic controllers will control the traffic through the intersection during these works. A condition from VicRoads is that traffic flow must be maintained, and no diversion put in place. There is the possibility of some minor traffic delays, but Vestas will try and limit these as much as possible.



The construction of the wind farm has been challenging due to the large amount of rain experienced over winter, but we have now poured nine foundations, and backfilled three of those. The works on the on-site substation are progressing to schedule.

The first shipment of the underground Medium-Voltage (MV) 33Kv cables have arrived and the electrical contractors have started laying this cabling which connects the turbine generators to the substation. Works are continuing on the internal access tracks, the construction and excavations of the wind turbine foundations and hardstands.

The first shipment of turbine components has arrived and has been unloaded at the Port of Geelong. In this shipment there were fifteen turbine nacelles and forty-three blades.

**Stage 1. Foundation for Wind Turbine Generator
Excavation of Foundation**



**Stage 2. Foundation for Wind Turbine Generator
Prepare WTG Hardstand**



**Stage 3. Foundation for Wind Turbine Generator
Install Electrical Conduit and Blinding Concrete**



**Stage 4. Foundation for Wind Turbine Generator
Install Steel Work and Concrete Form Work**



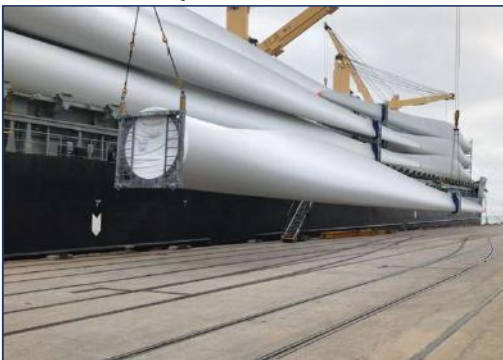
**Stage 5. Foundation for Wind Turbine Generator
Complete Concrete Pour of Foundation**



**Stage 6. Foundation for Wind Turbine Generator
Backfill Foundation**



**Unloading of Wind Turbine Blades at Geelong
First Shipment of 43 Blades**



**Unloading of Wind Turbine Nacelles at Geelong
First Shipment of 15 Nacelles**

